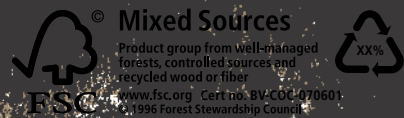


CORPORATE MARKETS 2011

AISCM1001

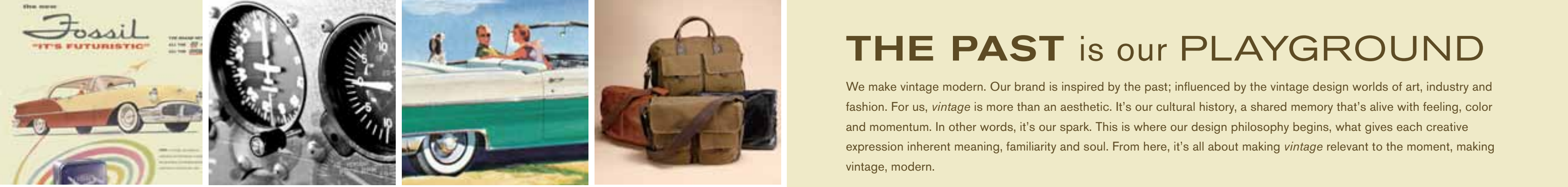


www.fossilcorporatemarkets.com

PPAI: 196495
ASI: 55145
SAGE: 64206



what vintage are you?



THE PAST is our PLAYGROUND

We make vintage modern. Our brand is inspired by the past; influenced by the vintage design worlds of art, industry and fashion. For us, *vintage* is more than an aesthetic. It's our cultural history, a shared memory that's alive with feeling, color and momentum. In other words, it's our spark. This is where our design philosophy begins, what gives each creative expression inherent meaning, familiarity and soul. From here, it's all about making *vintage* relevant to the moment, making vintage, modern.

Fossil Corporate Markets offers a wide variety of products and services used for incentives and recognition. Our products are most popular in these areas:

- | | |
|----------------------------|---------------------------|
| 1. Years of Service Awards | 6. Corporate Gifts |
| 2. Employee Motivation | 7. Dealer Incentives |
| 3. Employee Engagement | 8. Peer-to-Peer |
| 4. Sales Incentives | 9. Customer Loyalty |
| 5. Safety Awards | 10. Corporate Recognition |

* Decoration & Column pricing index located on page 31-37.

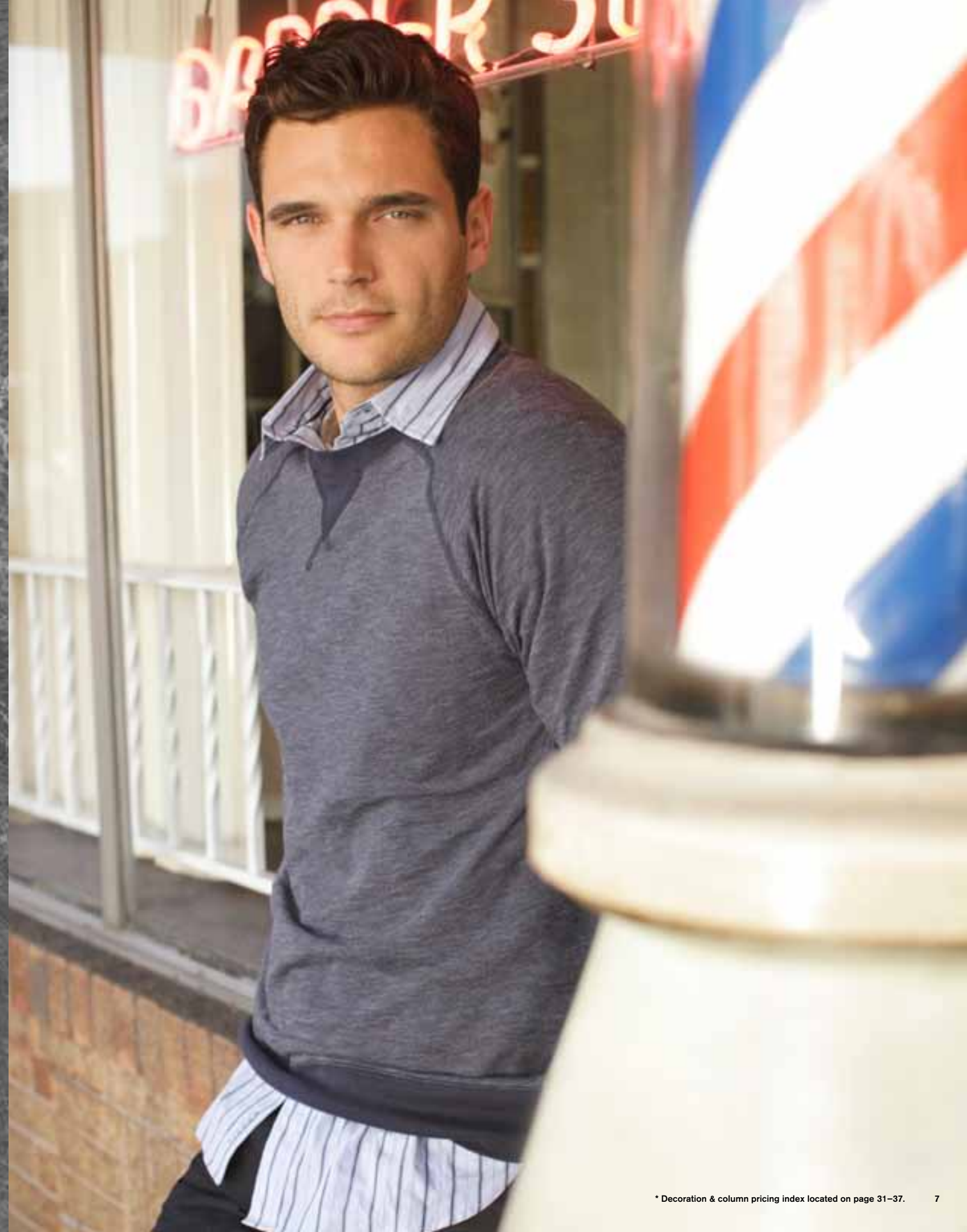


MEET DECKER

Our Decker Chronograph has a sporty look that works for either ballfield or the boardroom. The chronograph dial (with luminous indexes) sits inside a stainless steel case. This watch is classy in any context.



DECKER WATCHES 44 mm case size. Imported.
A | BLUE DIAL Men's. Stainless steel. PR5386 \$100.
B | WHITE DIAL Men's. Stainless steel. PR5384 \$100.
C | BLACK DIAL Men's. Black Silicone. PR5385 \$95.



WAGNER BAGS NEW

Our classic canvas Wagner bags hold your daily necessities in style. Two front pockets and antiqued brass hardware complete the look.



WAGNER BAGS Waxed Canvas. Imported.

A | WAGNER DUFFLE 19½"L x 13½"H x 9"W. Brown. MBGPR1949200 \$128.

B | WAGNER MESSENGER 16"L x 12"H x 4½"W. Brown. MBGPR1948200 \$78.

C | WAGNER BACKPACK 14"L x 16½"H x 5¾"W. Brown. MBGPR5393200 \$88.

opposite page

CLASSIC SPORT WATCHES Imported. Premium services available.

D | SILVER-TONE Women's. Stainless steel. 30mm case size. PR5339 \$80.

E | SILVER-TONE Men's. Stainless steel. 40mm case size. PR5338 \$80.

F | GOLD-TWO-TONE Women's. Stainless steel. 30mm case size. PR5341 \$90.

G | GOLD-TWO-TONE Men's. Stainless steel. 40mm case size. PR5340 \$90.



CLASSIC DRESS

Vintage. That's the look of this stainless steel watch. Silver markers surround the silver dial, a sweeping second hand stays in motion, and a stainless steel bracelet and leather strap give it a classic look.



A



C



B



D

CLASSIC DRESS WATCHES Imported. Premium services available.
A | BROWN LEATHER Men's, 43mm case size. PR5373 \$75.
B | BROWN LEATHER Women's, 31mm case size. PR5374 \$75.
C | SILVER-TONE Men's, Stainless steel, 43mm case size. PR5369 \$85.
D | SILVER-TONE Women's, Stainless steel, 31mm case size. PR5370 \$85.



MEN'S WALLET

Stay organized with our men's wallets. Featuring card slots, ID window, and bill compartment to keep you organized in various styles. Made from genuine leather, these have embossed logo detail inside to complete the classic looks.



A
NEW



B



C



D

E
NEW



F



G

H



I

J

NEW



K

NEW



L

NEW



M

MEN'S WALLET Genuine Leather. Imported. Premium services available.
 A | AVIATOR FRONT POCKET Brown. 2¾"L x 3 7⁄8"H. PR9101200 \$30.
 B | BUSTER 2 IN 1 Brown. 4¾"L x 3 1⁄2"H. PR8091200 \$35.
 C | ID BI-FOLD Brown. 4 7⁄8"L x 3"H. PR9001200 \$25.
 D | ID BI-FOLD Black. 4 7⁄8"L x 3"H. PR9001001 \$25.
 E | CARSON FLIP Brown. 4"L x 3"H. PR9104200 \$30.
 F | BUSTER FRONT POCKET Brown. 2¾"L x 3 7⁄8"H. PR8092200 \$30.
 G | FRONT POCKET Black. 4 7⁄8"L x 3"H. PR9000001 \$25.
 H | FRONT POCKET Brown. 4 7⁄8"L x 3"H. PR9000200 \$25.

opposite page

I | HAMPTON TRAVELER Black. 4 1⁄2"L x 3 5⁄8"H. PR9105001 \$30.
 J | HAMPTON TRAVELER Brown. 4 1⁄2"L x 3 5⁄8"H. PR9106200 \$30.
 K | AVIATOR TRAVELER Brown. 4 1⁄2"L x 3 5⁄8"H. PR9109200 \$35.
 L | CARSON TRAVELER Brown. 4 1⁄2"L x 3 5⁄8"H. PR9103200 \$30.
 M | BUSTER TRAVELER Brown. 4 1⁄2"L x 3 5⁄8"H. PR9013200 \$35.



CLASSIC SPORT

Go bold. Men's and women's white or blue dial with silver-tone precision index is set in a marked stainless steel case. Contour bracelet fits snugly and comfortably.



- CLASSIC SPORT WATCHES Imported. Premium services available.
- A | SILVER-TONE Men's. Silver dial. Stainless steel. 42mm case size. PR5357 \$80.
 - B | SILVER-TONE Women's. Silver dial. Stainless steel. 29mm case size. PR5358 \$80.
 - C | SILVER-TONE Men's. Blue dial. Stainless steel. 42mm case size. PR5359 \$80.
 - D | SILVER-TONE Women's. Blue dial. Stainless steel. 29mm case size. PR5360 \$80.

WOMEN'S FASHION

Fossil has taken the white watch and boyfriend trend and turned them into an enduring style. How did they do it? By focusing on their shared strength: great design. Fossil's iconic Stella features elegant designs with impeccable attention to detail. As versatile as they are fashionable, these watches are a welcome alternative to today's disposable fashions. Their timeless designs and quality constructions make them perfect keepsakes to be worn for years and years to come.



- WOMEN'S FASHION WATCHES Imported.
- A | SILVER-TONE Mother of Pearl dial. Stainless steel. 28mm case size. PR5379 \$85.
 - B | SILVER-TONE Stainless steel. Chronograph. 38mm case size. PR5387 \$105.
 - C | WHITE Resin. 37mm case size. PR5395 \$85.
 - D | WHITE Resin. Mother of Pearl dial. 30mm case size. PR5394 \$85.
 - E | SILVER-TONE Stainless steel. Adjust-o-matic. 25mm case size. PR5342 \$75.



THE MUST HAVES

Our favorite watches are enduringly classic with a hint of color.



CLASSIC SPORT WATCHES Imported. Premium services available.

- A | SILVER-TONE Women's. White dial. Stainless steel. 30mm case size. PR5335 \$80.
- B | SILVER-TONE Men's. White dial. Stainless steel. 40mm case size. PR5332 \$80.
- C | SILVER-TONE Women's. Gray dial. Stainless steel. 30mm case size. PR5333 \$80.
- D | SILVER-TONE Men's. Gray dial. Stainless steel. 40mm case size. PR5330 \$80.
- E | SILVER-TONE Women's. Blue dial. Stainless steel. 30mm case size. PR5334 \$80.
- F | SILVER-TONE Men's. Blue dial. Stainless steel. 40mm case size. PR5331 \$80.



WEEKENDER CASUAL

In jet black, this precision sport watch is perfect for work, a workout or a night out. The silicone strap is waterproof and built to survive all of your daily adventures.



WEEKENDER WATCH Imported. Premium services available.
SILVER-TONE Men's. Black dial. Silicone strap.
45mm case size. PR5391 \$75.





BUSINESS DRESS

A silver dial, brushed stainless steel case, and a genuine brown leather strap or stainless bracelet make this a classic, everyday watch.



- CLASSIC DRESS WATCHES Imported. Premium services available.
- A | BLACK LEATHER Men's. Silver dial, 44mm x 33mm case size. PR5324 \$75.
 - B | BLACK LEATHER Women's. Silver dial, 36mm x 24mm case size. PR5325 \$75.
 - C | SILVER-TONE Men's. Silver dial. Stainless steel. 44mm x 33mm case size. PR5326 \$85.
 - D | SILVER-TONE Women's. Silver dial. Stainless steel. 36mm x 24mm case size. PR5327 \$85.

DIAMOND DRESS

This watch definitely goes well with a dapper style. The stainless bracelet tapers for a modern look and a diamond at the 12-hour marker accents the rectangular dial.



- DIAMOND DRESS Imported.
- A | SILVER-TONE Men's. Black dial. Stainless steel. 48mm x 34mm case size. PR5346 \$95.
 - B | SILVER-TONE Women's. Black dial. Stainless steel. 35mm x 24mm case size. PR5347 \$95.
 - C | BLACK-TONE Men's. Black dial. Black Stainless steel. 48mm x 34mm case size. PR5350 \$105.
 - D | BLACK-TONE Men's. Black dial. Black Stainless steel. 35mm x 24mm case size. PR5351 \$105.



- SMALL LEATHERS. Imported. Premium services available.
- E | WRISTLET 6 3/4"L x 4"H. Leather. Black. Imported. PR8067001 \$42.
 - F | WRISTLET 6 3/4"L x 4"H. Leather. Brown. Imported. PR8067200 \$42.



- SMALL LEATHERS. Imported. Premium services available.
- G | JOURNAL 6 3/4"L x 7"H. Leather. Black. PR9010001 \$40.
 - H | JOURNAL 6 3/4"L x 7"H. Leather. Brown. PR9012200 \$40.
 - I | JOURNAL 6 3/4"L x 7"H. Leather. Espresso. PR9011206 \$40.

SUNWEAR

Authentically styled sunglasses with a lightweight design for maximum comfort.



* Sunwear packaging price available on page 37

A Fossil gift card makes the perfect gift for everyone! It can be used at Fossil retail stores and www.fossil.com. Just like Fossil's collectible watch tins, each gift card comes in a decorative fitted card tin.

RETAIL STORES



WWW.FOSSIL.COM



GIFT CARD TINS



GIFT CARD

- Minimum face value starting at \$25 with custom denominations available.
- Option to purchase PIN numbers and receive on email / HTML.
- Visit www.fossil.com for a retail locator.
- Ability to stack up to 5 cards online.
- 72 hours turnaround on request.
- MOQ 15 (h)



A



B



C



D



E



F



G



H

SUNGLASSES Imported.

- A | LINDA PR3765200 \$40.
100% UVA and UVB protection.
- B | COLEY PR3806040 \$40.
100% UVA and UVB protection.

- C | MARIE PR3801200 \$50.
100% UVA and UVB protection.
- D | DALLAS PR3808001 \$45.
100% UVA and UVB protection.
Polarized.

- E | GARDEN CITY PR3807200 \$55.
100% UVA and UVB protection.
- F | WINSTON PR3788001 \$45.
100% UVA and UVB protection.

- G | LACEY PR3810200 \$40.
100% UVA and UVB protection.
- H | PATRICK PR3809001 \$45.
100% UVA and UVB protection.
Polarized.



MODERN SPORT

The classic men's sport watch with a modern update. The heavy stainless steel construction, coupled with the textured silver dial, creates a perfect wear-anywhere look.

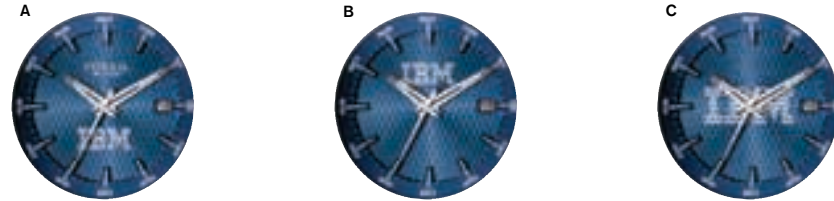


SPORT WATCH Imported. Premium services available.
SILVER-TONE Textured dial. Men's. Stainless steel.
44mm case size. PR5390 \$100.



STANDARD DIAL IMPRINT

- Standard dial layout features your logo at the six o'clock position.
- Fossil is typically positioned at 12 o'clock.
- Fossil logo can be removed to leave room for options shown on dials b, c and custom dials.



CUSTOM DIAL TECHNIQUES

- MOQ of 100 units per style
- 6 weeks for sample
- 6 weeks for production
- Setup \$200 (c) per style
- Sampling EQP (c)

Logo Lapping - This unique custom process provides a raised 3D effect.



PMS color matching
No running charge



Logo etching
\$2 (C) running charge



Logo lapping
\$2 (C) running charge



Logo lapping on mirror dial
\$2 (C) running charge



Lapping outline with color fill
\$2 (C) running charge

CASEBACK ENGRAVING



On each Fossil watch caseback, there is an area designated for engraving logos and/or messages.

Please note: Engraving area will vary by style.

In some cases, your logo may appear to be "turned" or "not straight/upright".

BRACELET CLASP ENGRAVING



Applies to Fossil styles:

Page 4: 5384, 5386
Page 7: 5338, 5339, 5340, 5340
Page 8: 5369, 5370
Page 13: 5357, 5358, 5359, 5360
Page 14: 5379
Page 16: 5330, 5331, 5332, 5333, 5334, 5335
Page 21: 5326, 5327
Page 22: 5346, 5347
Page 26: 5390
Clasp sizes vary by style.

LEATHER DEBOSS



Imprint area varies by style.

Please note: In some cases extremely detailed logos will lose quality when debossed at smaller sizes.

SUNGLASS POUCH



Imprint area varies by style.

Please note: In some cases extremely detailed logos will lose quality when debossed at smaller sizes.

FOIL STAMP



Imprint area varies by style.

Please note: In some cases extremely detailed logos will lose quality when debossed at smaller sizes.

WATCH TINS Imported.
A | RETAIL TIN PRP001
B | SPEEDY TIN Blank tin for imprinting logo. PRP040

bottom left image
LEATHER PACKAGING metal tins for small leather goods. Paper package for Ladies wristlet.

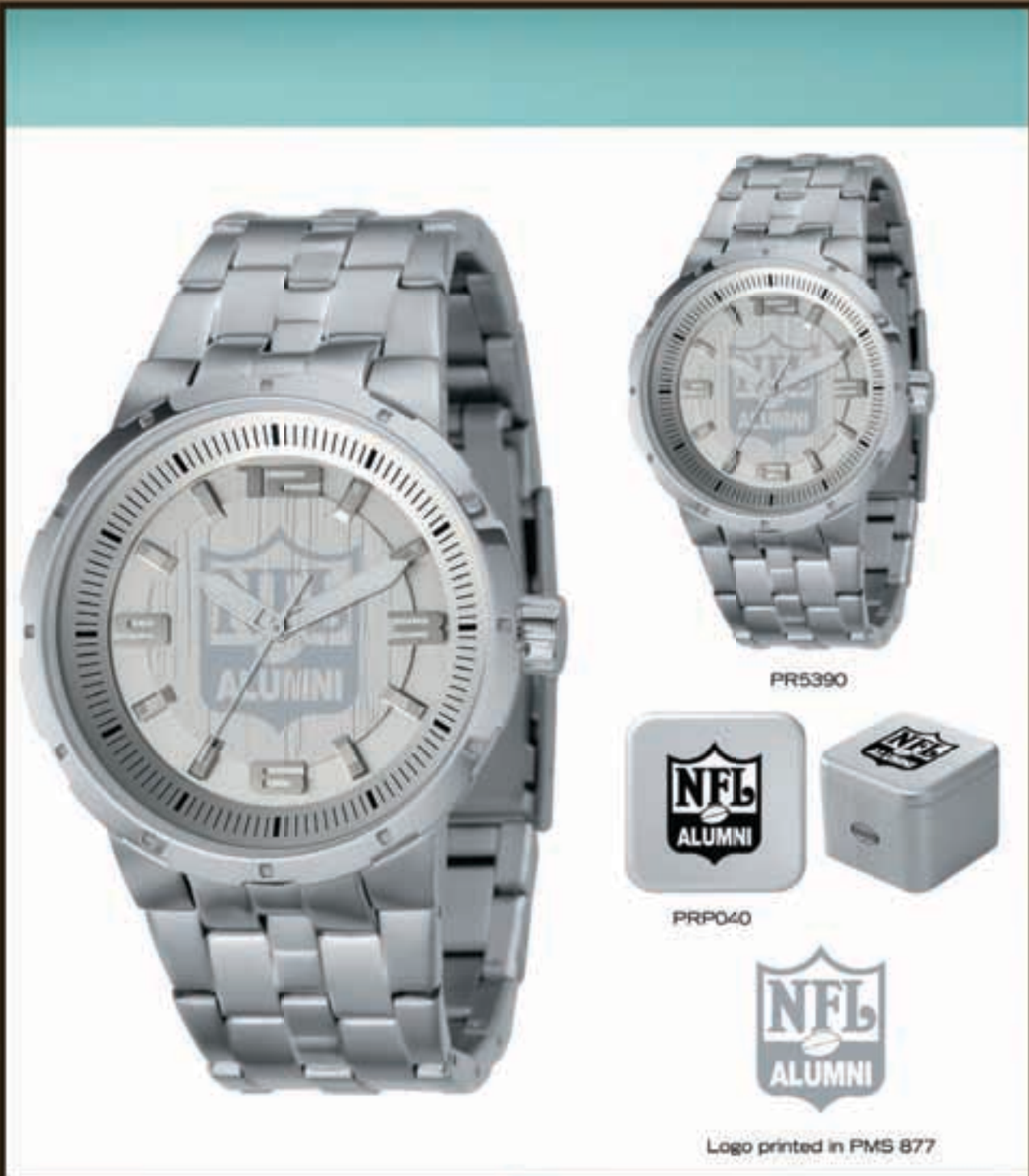
bottom right image
WAGNER BAG MBGPR1948200



* Speedy tin packaging price available on page 37



* Decoration & column pricing index located on page 31-37. 31



PR5390

PRP040

Logo printed in PMS 877

Customer Information
 Logo Name: NFL Alumni
 Computer Design Reference #: Comp 1.1
 Date: 01.01.11
 Designer: _____
 Regional Rep: _____
 PO#: _____

CORPORATE MARKETS DIVISION



what vintage are you?

DECORATION AND COLUMN PRICING INDEX



a. PR5386 b. PR5384 c. PR5385

PRODUCT NUMBER	10	25	50	100
a. PR5386	\$ 100	98	96	94
b. PR5384	\$ 100	98	96	94
c. PR5385	\$ 95	93	91	89

DECORATION OPTIONS	STANDARD
MOQ	10 units
Lead time	10-15 days
Engraving setup	\$225 (c)
Engraving run charge	\$10.00 (c)
LTM	\$50 (z) / 6



CASEBACK ENGRAVING

***Dial decoration unavailable**
 Styles cannot be combined to reach minimum. Production time starts after design, order confirmation, and credit approval. Undecorated items ship in 5 days. All orders include retail packaging. Custom packaging available. (pg.29) More engraving options (pg.28)



a. PR5357 b. PR5358 c. PR5359 d. PR5360

PRODUCT NUMBER	25	50	100	250
a. PR5357	\$ 80	78	76	74
b. PR5358	\$ 80	78	76	74
c. PR5359	\$ 80	78	76	74
d. PR5360	\$ 80	78	76	74

DECORATION OPTIONS	STANDARD	PREMIUM
MOQ	25 units	10 units
Lead time	4-5 weeks	10-15 days
Setup per color	\$100 (c)	\$100 (c)
Imprint run charge	N/C	\$10.00 (c)
Each additional color	\$0.50 (c)	\$2.00 (c)
Engraving setup	\$100 (c)	\$225 (c)
Engraving run charge	\$2.00 (c)	\$10.00 (c)
LTM	\$50 (z) / 15	\$50 (z) / 6

Standard price includes 2-color dial imprint. Styles cannot be combined to reach minimum. Production time starts after design, order confirmation, and credit approval. Undecorated items ship in 5 days. All orders include retail packaging. Custom packaging available. (pg.29)



d. PR5339 e. PR5338 f. PR5341 g. PR5340

PRODUCT NUMBER	25	50	100	250
d. PR5339	\$ 80	78	76	74
e. PR5338	\$ 80	78	76	74
f. PR5341	\$ 90	88	86	84
g. PR5340	\$ 90	88	86	84

DECORATION OPTIONS	STANDARD	PREMIUM
MOQ	25 units	10 units
Lead time	4-5 weeks	10-15 days
Setup per color	\$100 (c)	\$100 (c)
Imprint run charge	N/C	\$10.00 (c)
Each additional color	\$0.50 (c)	\$2.00 (c)
Engraving setup	\$100 (c)	\$225 (c)
Engraving run charge	\$2.00 (c)	\$10.00 (c)
LTM	\$50 (z) / 15	\$50 (z) / 6

Standard price includes 2-color dial imprint. Styles cannot be combined to reach minimum. Production time starts after design, order confirmation, and credit approval. Undecorated items ship in 5 days. All orders include retail packaging. Custom packaging available. (pg.29)



a. PR5379 b. PR5387 c. PR5395 d. PR5394 e. PR5342

PRODUCT NUMBER	10	25	50	100
a. PR5379	\$ 85	83	81	79
b. PR5387	\$ 105	103	101	99
c. PR5395	\$ 85	83	81	79
d. PR5394	\$ 85	83	81	79
e. PR5342	\$ 75	73	71	69

DECORATION OPTIONS	STANDARD
MOQ	10 units
Lead time	10-15 days
Engraving setup	\$225 (c)
Engraving run charge	\$10.00 (c)
LTM	\$50 (z) / 6



CASEBACK ENGRAVING

***Dial decoration unavailable**
 Styles cannot be combined to reach minimum. Production time starts after design, order confirmation, and credit approval. Undecorated items ship in 5 days. All orders include retail packaging. Custom packaging available. (pg.29) More engraving options (pg.28) -Adjust-o-matic: self adjusting links



a. PR5373 b. PR5374 c. PR5369 d. PR5370

PRODUCT NUMBER	25	50	100	250
a. PR5373	\$ 75	73	71	69
b. PR5374	\$ 75	73	71	69
c. PR5369	\$ 85	83	81	79
d. PR5370	\$ 85	83	81	79

DECORATION OPTIONS	STANDARD	PREMIUM
MOQ	25 units	10 units
Lead time	4-5 weeks	10-15 days
Setup per color	\$100 (c)	\$100 (c)
Imprint run charge	N/C	\$10.00 (c)
Each additional color	\$0.50 (c)	\$2.00 (c)
Engraving setup	\$100 (c)	\$225 (c)
Engraving run charge	\$2.00 (c)	\$10.00 (c)
LTM	\$50 (z) / 15	\$50 (z) / 6

Standard price includes 2-color dial imprint. Styles cannot be combined to reach minimum. Production time starts after design, order confirmation, and credit approval. Undecorated items ship in 5 days. All orders include retail packaging. Custom packaging available. (pg.29)



a. PR5335 b. PR5332 c. PR5333 d. PR5330 e. PR5334 f. PR5331

PRODUCT NUMBER	25	50	100	250
a. PR5335	\$ 80	78	76	74
b. PR5332	\$ 80	78	76	74
c. PR5333	\$ 80	78	76	74
d. PR5330	\$ 80	78	76	74
e. PR5334	\$ 80	78	76	74
f. PR5331	\$ 80	78	76	74

DECORATION OPTIONS	STANDARD	PREMIUM
MOQ	25 units	10 units
Lead time	4-5 weeks	10-15 days
Setup per color	\$100 (c)	\$100 (c)
Imprint run charge	N/C	\$10.00 (c)
Each additional color	\$0.50 (c)	\$2.00 (c)
Engraving setup	\$100 (c)	\$225 (c)
Engraving run charge	\$2.00 (c)	\$10.00 (c)
LTM	\$50 (z) / 15	\$50 (z) / 6

Standard price includes 2-color dial imprint. Styles cannot be combined to reach minimum. Production time starts after design, order confirmation, and credit approval. Undecorated items ship in 5 days. All orders include retail packaging. Custom packaging available. (pg.29)



a. PR5391



b. PRAMS5392
additional option
for PR5391



c. PR5390

PRODUCT NUMBER 25 50 100 250

a. PR5391	\$ 75	73	71	69
a. PRAMS5392	\$ 25	25	25	25
a. PR5390	\$ 100	98	96	94

4(c)

DECORATION OPTIONS STANDARD PREMIUM

MOQ	25 units	10 units
Lead time	4-5 weeks	10-15 days
Setup per color	\$100 (c)	\$100 (c)
Imprint run charge	N/C	\$10.00 (c)
Each additional color	\$0.50 (c)	\$2.00 (c)
Engraving setup	\$100 (c)	\$225 (c)
Engraving run charge	\$2.00 (c)	\$10.00 (c)
LTM	\$50 (z) / 15	\$50 (z) / 6

Standard price includes 2-color dial imprint. Styles cannot be combined to reach minimum. Production time starts after design, order confirmation, and credit approval. Undecorated items ship in 5 days. All orders include retail packaging. Custom packaging available. (pg.29)



a. PR5324



b. PR5325



c. PR5326



d. PR5327

PRODUCT NUMBER 25 50 100 250

a. PR5324	\$ 75	73	71	69
b. PR5325	\$ 75	73	71	69
c. PR5326	\$ 85	83	81	79
d. PR5327	\$ 85	83	81	79

4(c)

DECORATION OPTIONS STANDARD PREMIUM

MOQ	25 units	10 units
Lead time	4-5 weeks	10-15 days
Setup per color	\$100 (c)	\$100 (c)
Imprint run charge	N/C	\$10.00 (c)
Each additional color	\$0.50 (c)	\$2.00 (c)
Engraving setup	\$100 (c)	\$225 (c)
Engraving run charge	\$2.00 (c)	\$10.00 (c)
LTM	\$50 (z) / 15	\$50 (z) / 6

Standard price includes 2-color dial imprint. Styles cannot be combined to reach minimum. Production time starts after design, order confirmation, and credit approval. Undecorated items ship in 5 days. All orders include retail packaging. Custom packaging available. (pg.29)



a. PR5346



b. PR5347



c. PR5350



d. PR5351

PRODUCT NUMBER 10 25 50 100

a. PR5346	\$ 95	93	91	89
b. PR5347	\$ 95	93	91	89
c. PR5350	\$ 105	103	101	99
d. PR5351	\$ 105	103	101	99

4(c)

DECORATION OPTIONS STANDARD

MOQ	10 units
Lead time	10-15 days
Engraving setup	\$225 (c)
Engraving run charge	\$10.00 (c)
LTM	\$50 (z) / 6



CASEBACK ENGRAVING

***Dial decoration unavailable**

Styles cannot be combined to reach minimum. Production time starts after design, order confirmation, and credit approval. Undecorated items ship in 5 days. All orders include retail packaging. Custom packaging available. (pg.29). More engraving options (pg.28)



e. MBGPR1948200



f. MBGPR1949200



g. MBGPR5393200

PRODUCT NUMBER 10 25 50 100

e. MBGPR1948200	\$ 78	76	74	72
f. MBGPR1949200	\$ 128	126	124	122
g. MBGPR5393200	\$ 88	86	84	82

4(c)

DECORATION OPTIONS STANDARD

MOQ	10 units
Lead time	10-15 days
Setup per location	\$150 (c)
Deboss run charge	\$10.00 (c)
LTM	\$50 (z) / 6
Reorder setup fee	\$25 (z)



FOIL STAMP

Styles cannot be combined to reach minimum. Production time starts after design, order confirmation, and credit approval. All orders subject to availability. Undecorated items ship in 5 days. More decoration options (pg.28)



a. PR9101200
Aviator Front Pocket



b. PR8091200
Buster 2 in 1



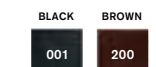
c. PR9001200
ID Bi-fold



e. PR9104200
Carson Flip



f. PR8092200
Buster Front Pocket



PRODUCT NUMBER 25 50 100

a. PR9101200	\$ 30	29	28
b. PR8091200	\$ 35	34	33
c. PR9001200	\$ 25	24	23
d. PR9001001	\$ 25	24	23
e. PR9104200	\$ 30	29	28
f. PR8092200	\$ 30	29	28

4(c)

DECORATION OPTIONS STANDARD PREMIUM

MOQ	25 units	10 units
Lead time	4 weeks	10-15 days
Setup per location	\$100 (c)	\$125 (c)
Deboss run charge	\$ 5.00 (c)	\$10.00 (c)
LTM	\$50 (z) / 15	\$50 (z) / 6
Reorder setup fee	N/C	\$25 (z)



LEATHER DEBOSS

Production time starts after design, order confirmation, and credit approval. All orders subject to availability. Undecorated items ship in 5 days. Styles cannot be combined to reach minimum. All orders include retail packaging. (pg.29)



g. PR9000001
Front Pocket



i. PR9105001
Hampton Traveler



k. PR9109200
Aviator Traveler



l. PR9103200
Carson Traveler



m. PR9013200
Buster Traveler



PRODUCT NUMBER 25 50 100

g. PR9000001	\$ 25	24	23
h. PR9000200	\$ 25	24	23
i. PR9105001	\$ 30	29	28
j. PR9106200	\$ 30	29	28
k. PR9109200	\$ 35	34	33
l. PR9103200	\$ 30	29	28
m. PR9013200	\$ 35	34	33

4(c)

DECORATION OPTIONS STANDARD PREMIUM

MOQ	25 units	10 units
Lead time	4 weeks	10-15 days
Setup per location	\$100 (c)	\$125 (c)
Deboss run charge	\$ 5.00 (c)	\$10.00 (c)
LTM	\$50 (z) / 15	\$50 (z) / 6
Reorder setup fee	N/C	\$25 (z)



LEATHER DEBOSS

Production time starts after design, order confirmation, and credit approval. All orders subject to availability. Undecorated items ship in 5 days. Styles cannot be combined to reach minimum. All orders include retail packaging. (pg.29)

BLACK ESPRESSO
001 206



e. PR8067001
f. PR8067200



g. PR9010001



h. PR9012200



i. PR9011206

PRODUCT NUMBER 25 50 100 250

e. PR8067001	\$ 42	40	38	36
f. PR8067200	\$ 42	40	38	36
g. PR9010001	\$ 40	38	36	34
h. PR9010200	\$ 40	38	36	34
i. PR9012206	\$ 40	38	36	34

4(c) LEATHER DEBOSS

DECORATION OPTIONS STANDARD PREMIUM

MOQ	25 units	10 units
Lead time	4 weeks	10-15 days
Setup per location	\$100 (c)	\$125 (c)
Deboss run charge	\$ 5.00 (c)	\$10.00 (c)
LTM	\$50 (z) / 15	\$50 (z) / 6
Reorder setup fee	N/C	\$25 (z)

Production time starts after design, order confirmation, and credit approval. All orders subject to availability. Undecorated items ship in 5 days. Styles cannot be combined to reach minimum. All orders include retail packaging. (pg.29)



a. PR3765200
Linda



b. PR3806040
Coley



c. PR3801200
Marie



d. PR3808001
Dallas

PRODUCT NUMBER 25 50 100 250

a. PR3765200	\$ 40	38	36	34
b. PR3806040	\$ 40	38	36	34
c. PR3801200	\$ 50	48	46	44
d. PR3808001	\$ 45	43	41	39

4(c)

Production time starts after design, order confirmation, and credit approval. Decoration only available on packaging. Visit www.fossil.com for more sunwear styles. All sunwear orders will ship in black microfiber pouch or custom tin packaging.



e. PR3807200
Garden City



f. PR3788001
Winston



g. PR3810200
Lacey



h. PR3809001
Patrick

PRODUCT NUMBER 25 50 100 250

e. PR3807200	\$ 55	53	51	49
f. PR3788001	\$ 45	43	42	41
g. PR3810200	\$ 40	38	36	34
h. PR3809001	\$ 45	43	41	39

4(c)

Production time starts after design, order confirmation, and credit approval. Decoration only available on packaging. Visit www.fossil.com for more sunwear styles. All sunwear orders will ship in black microfiber pouch or custom tin packaging.



h. PRP040

DECORATION OPTIONS STANDARD PREMIUM

MOQ	25 units	10 units
Lead time	4-5 weeks	10-15 days
Setup per color	\$100 (c)	\$100 (c)
Imprint run charge	\$1.50 (c)	\$3.00 (c)
Each additional color	\$1.50 (c)	\$2.50 (c)

Production time starts after design, order confirmation, and credit approval. Tins available only with watch purchase.



f. PRP041

DECORATION OPTIONS TIN STANDARD

MOQ	25 units
Lead time	4-5 weeks
Setup per color	\$100 (c)
Imprint run charge	\$2.50 (c)
Each additional color	\$1.50 (c)

Production time 4 weeks starts after design, order confirmation, and credit approval. Orders over 250 subject to availability. Tins available only with sunwear purchase.



h. PKSPOUCH

DECORATION OPTIONS POUCH STANDARD

MOQ	25 units
Lead time	4-5 weeks
Setup per color	\$100 (c)
Imprint run charge	\$2.50 (c)
<i>(Limited to 1 color only)</i>	

Production time 4 weeks starts after design, order confirmation, and credit approval. Orders over 250 subject to availability. Pouch available only with sunwear purchase.



SUNGLASS POUCH

Fast Fossil virtual proof

Our team of graphic designers will design a presentation-quality virtual proof free of charge within 48-72 hours from art received.

Art requirements

Vector art is required due to the need our designers have when working with logos, illustrations, type and graphics that are typically scaled to different sizes. Vector graphics, which Adobe Illustrator and InDesign create, consist of smooth lines that retain their clarity when scaled up or down to size. Vector art will ensure production of the highest-quality product.

Art files must meet the following requirements

Adobe Illustrator
Adobe Photoshop
Adobe InDesign
EPS, AI or PDF vector files preferred.

Unacceptable art

The following are unacceptable: Logos from a letterhead or any Xerox copy; low-resolution JPEG; low-resolution files/logos downloaded from your web site; (artwork or logos printed on coasters, napkins, labels, T-shirts or any other unsuitable object.) If you have questions about the art you are sending, please contact your Inside Sales Representative.

FAQ

Q: What is production time?

A: Standard production time is 4 weeks after design, order confirmation and credit approval unless otherwise stated. This is calculated in working days and applies to quantities listed in the catalog. For lead times on quantities over 250 please contact your Inside Sales Representative.

Q: Does Fossil offer a faster service than 4 weeks?

A: Yes! – Most styles are part of our 10-15 day, 10-piece minimum premium rush service.

Q: Can I order a sample?

A: Sample orders require a purchase order number. Sample products are billed at EQP on a (c)

Q: What is the standard imprint area?

A: We will size your logo to fit on all of our products. Refer to page 28.

Q: When do I pay for set-up charges?

A: Set-ups will be applied to the original order. Any exact re-orders have no setup charge. All logo art will be archived for 2 years.

Q: What is MOQ?

A: MOQ stands for minimum order quantity. Cannot combine styles to reach MOQ.

Q: What is LTM?

A: LTM stands for less than minimum.

Q: When do I pay for running charges?

A: The price of our watches includes 2-color dial imprint. Running charges apply for extra dial imprint colors, caseback engraving, clasp engraving, applied, lapped and dial engraving applications. Running charges will also be applied to premium service orders.

Q: Can sunglasses be imprinted?

A: The custom tin packaging can be imprinted but the sunglasses will be sold as clean merchandise.

Q: Is packaging included with each order?

A: Retail packaging is included with each purchase, excluding large items such as shave kits and messenger bags. Optional customized packaging is available on most products for an additional cost.

Q: What is the F.O.B. location and standard shipping method?

A: Dallas, TX 75238 via UPS Ground.

Q: What is the warranty on Fossil watches?

A: Limited 11 (eleven) year warranty. For more details please visit www.fossil.com or see the warranty booklet included with each watch purchase.

Q: What is ATM?

A: ATM is the unit for atmosphere, a measurement of pressure.
1 ATM = 33 feet below the surface of the ocean.



what Vintage are you?